



Shannon proudly manufactures the INSULTECH® family brand of insulation products.

**FOR...  
THE POWER  
GENERATION  
INDUSTRY**

## **SHANNON Thermal, Acoustic Blanket Insulation**

*...is a pre-engineered thermal acoustical insulation system* designed to minimize insulation maintenance, improve engine performance and improve the surrounding work environment.

*...eliminates the many typical problems* associated with conventional cement block insulation.

*...is removable and reusable.* Blanket pieces can be installed and removed using in-house personnel. By following an installation assembly drawing, blanket pieces can be installed in tag number sequence.

*...is custom fit, through CAD/CNC technology* allowing versatility in equipment coverage. Varying blanket designs will accommodate operating temperatures to 1500°F (815°C). Our "Exact Fit" approach assures a high quality and a very high probability of re-installation. We expect a 15 year service life on all INSULTECH® products.

### **Advantages**

- Can be installed with plant personnel
- Can be reused numerous times
- Is a closed insulation system
- Is custom-fit to existing conditions
- Is an ideal replacement for Asbestos
- Is vibration resistant
- Is designed to reduce harmful noise

### **Applications**

- Exhaust Piping
- Exhaust Flanges
- Exhaust Manifolds
- Turbo Charger Cases
- Expansion Joints
- Exhaust Cones
- By-Pass Piping
- Exhaust Housings



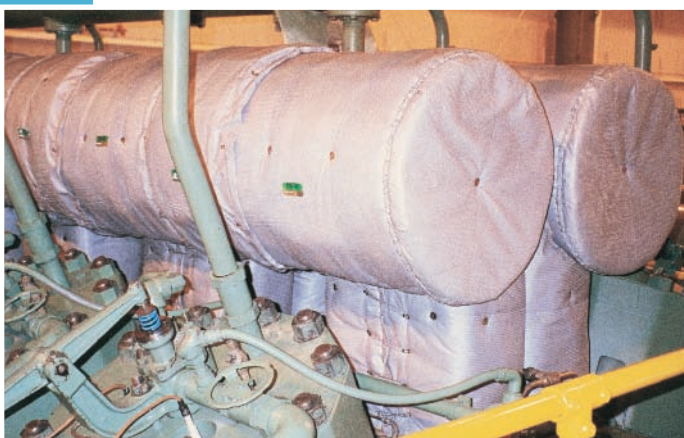
### **ENGINE EXHAUST TURBOCHARGER**

Design: HT1100MSGM – 2" thick  
INSULTECH® THERMAL



### **MARINE ENGINE EXHAUST & PIPING**

Design: HT1100A-MSGM – 2.0" thick  
INSULTECH® ACOUSTIC/THERMAL



### **TCV-12 SECTIONAL MANIFOLD EXHAUST**

Design: HT1100MSGM – 2.0" thick  
INSULTECH® THERMAL



### **GAS TURBINE HOUSING**

Design: HT1100MSGM – 2.0" thick  
INSULTECH® THERMAL

**Thermal Efficiency . . . . . Safety . . . . . Noise Reduction**





Shannon proudly manufactures the INSULTECH® family brand of insulation products.

# APPLICATIONS FOR THE POWER GENERATION INDUSTRY



## DUAL 24" EXHAUST PIPING & CATALYTIC CONVERTER'S

Design: HT1100MSGM – 2" thick – Wiretwist Fasteners  
INSULTECH® THERMAL BLANKET



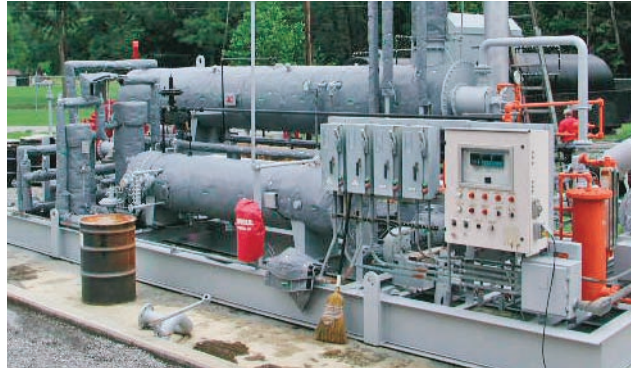
## GAS TURBINE INLET PIPING

Design: LT450A-TT – 1.5" thick 6 – 8 dBA Reduction  
INSULTECH® ACOUSTIC



## GAS TURBINE EXHAUST & CATALYTIC CONVERTER

Design: HT1100MSGM – 2" thick – Wiretwist Fasteners  
INSULTECH® THERMAL BLANKET



## DE-HY SKID & PIPING

Design: LT450TT – Velcro Fasteners  
INSULTECH® THERMAL



## SERVICE CONNECT PIPING

Design: HT1100A-MSGM – 2" thick  
INSULTECH® ACOUSTIC – 12 DBA Reduction



## TURBINE EXHAUST DUCT

Design: HT1100A-MSGM – 2.0" thick  
INSULTECH® ACOUSTIC/THERMAL

### Shannon Enterprises of W.N.Y. Inc.

75 Main Street, P.O. Box 199, North Tonawanda, NY 14120, USA  
www.blanket-insulation.com  
(716) 693-7954, FAX (716) 693-1647

### Shannon Insultech International Kft.

4110 Biharkeresztes, Kossuth Street, Nr. 25, Hungary  
www.shannon-insultech.eu  
+36305584126

Representation By: